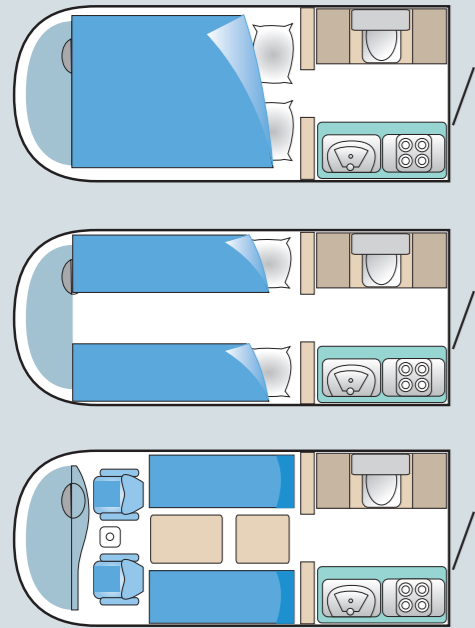


ROMAHOME

# R25

Internal layout combination



## Technical Specifications

### Interior

- Heki skylight & rear skylight
- Seitz windows with blinds and flyscreen
- Zig X70 Battery charger system, mains x 2 sockets
- Mains hook up & 3 x 240v socket & 1 x 12v socket
- 110 amp leisure battery • LED & Halogen lights
- Hot water & blown air heating via Webasto Thermo Top C300 • Freestanding table

### Kitchen/Bathroom

- Electric ignition 3 way 60 litre fridge/freezer
- Electric ignition glass top hob & grill
- Dometic cassette toilet •34 litre fresh water tank

### Dining/Living/Bedroom

- 2 slim-line wardrobes
- 2 cab singles or 1 double bed

### Storage

- 4 overhead lockers • 34 litre waste water tank

### Motorhome options

- Driver/passenger seat covers
- 15" flip-down TV/DVD & antennae
- Amperor power guardian electrical monitoring system with touch-screen controls
- 50 amp battery to battery charging system
- Solar panel
- Extra internal 240v & 12v socket
- Silver screen for three cab window
- Turbo vent over cooker
- Two rear inertia seat belts
- Wet room / shower tray with extendable fawcett and upgrade 70 Litre fresh and waste water tanks, plus Vanity locker & mirror
- External rear door Grab handle
- Electric step •Retractable twin bike rack
- BBQ./Grill internal storage & external gas fitting
- Optional Docking table for BBQ/ grill
- External 240v socket •Reversing sensors
- Reversing camera and monitor
- Fully retractable rear cycle rack suitable for two bikes



# R25



There's a model to suit you R10 • R20Lo • R20Hi • R25 • R30 • R40



[www.romahome.com](http://www.romahome.com)

Information Hotline  
© 01983 292451  
email: [sales@romahome.com](mailto:sales@romahome.com)

Romahome Ltd, Prospect Road, Cowes, Isle of Wight PO31 7AD



there's a whole world out there



R25

## ROMAHOME

Romahome Ltd are specialists in the manufacture of micro coach-built motor homes. We have a manufacturing plant based on the Isle of Wight, combined with a specialised dealer network across the UK.

Since the first Romahome was built in 1982 Romahome's philosophy has been to produce motor homes that have the versatility, economy and drivability of a car, combined with all the features of a motor home. This is why many of our owners have their Romahome as their only vehicle.

Romahomes have evolved even further on this theme by introducing new models that incorporate four forward facing seats, and introducing a low profile motorhome for better access to car parks and parking in garages.

## AWARD WINNERS

Romahomes have been manufactured by skilled craftsmen on the Isle of Wight for the best part of 30 years and have continued to win awards for design and quality since 1988 from the caravan and motorhome industry for our vehicles. In 2009 Romahome won the prestigious "Motorhome Manufacturer of the Year" award by MMM magazine.

## R25

Once again, Romahome have designed a motorhome for exploring and escaping city life yet still ideal for urban use.

It's small and compact and with the option of rear seat belts to enable four people to travel in comfort and safety it can truly be used as your sole vehicle.

This two berth motorhome has masses of well thought out storage space and some very clever options including a specially designed bike rack and outside BBQ point.

The R25 has a full glass fibre monocoque body built on the latest Citroen Berlingo chassis cab with a 1.6 Hdi 90hp diesel engine.

## CITROËN BERLINGO

- 1.6 hdi 75bhp turbo diesel
- Power assisted steering
- Electric cab windows
- Electric wing mirror
- Cab remote central locking
- Transponder immobiliser
- Radio/Cassette Player
- 60 litre fuel tank

Citroën options:

- Cab air conditioning\*
- ABS

### Base vehicle dimensions

Overall length	5.2m / 17ft 6in
Width (closed wing mirrors)	2.1m / 6ft 8in
Overall height	2.60m / 8ft 5in
Single bed (two/each)	1.9m x 0.62m 6ft 2in x 2ft 1in
Double bed (one)	1.76m x 1.2m/5ft 7in
Max gross vehicle weight	2175kg
User payload	300kg

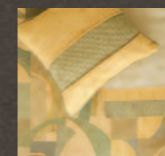


there's a whole world out there

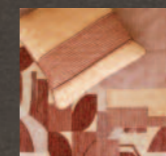


## TRIM OPTIONS

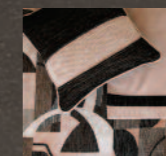
Choose from a selection of brand new upholstery and curtain fabrics exclusively designed and produced for Romahome. Using quality fabrics, the bespoke furnishings for each vehicle are made in the UK to perfectly compliment the range of Romahome's interior finishes throughout their fleet.



Key Lime



Jammy Dodger



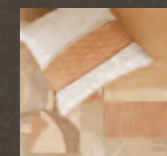
Iced Mocha



Espresso



Blueberry Muffin



Caffe Latté



CITROËN 3 YEARS MANUFACTURER'S WARRANTY